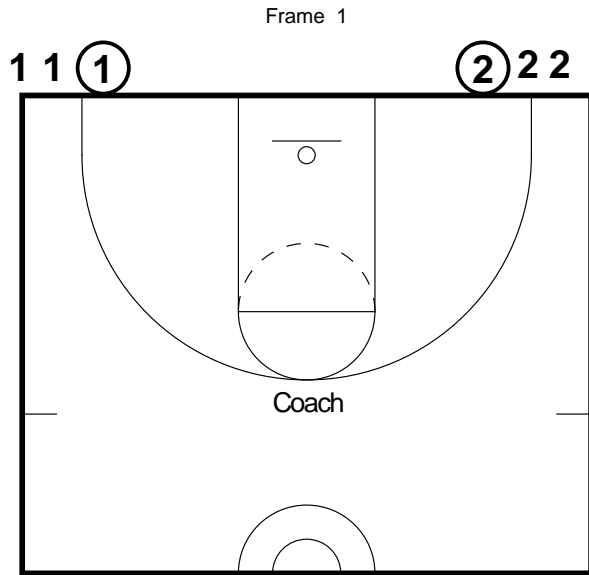
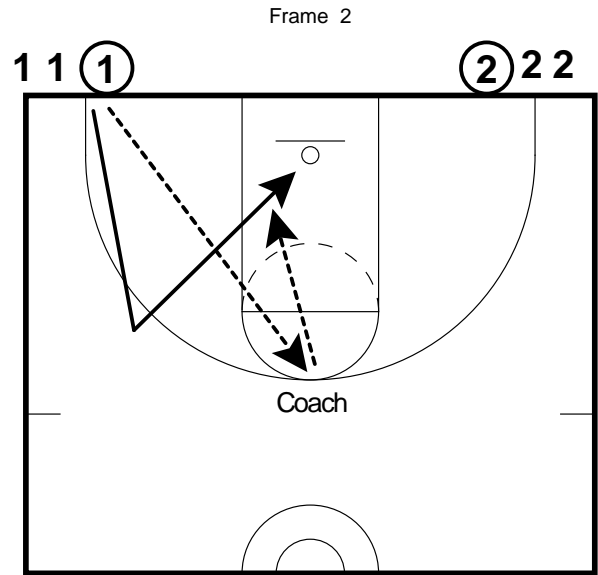


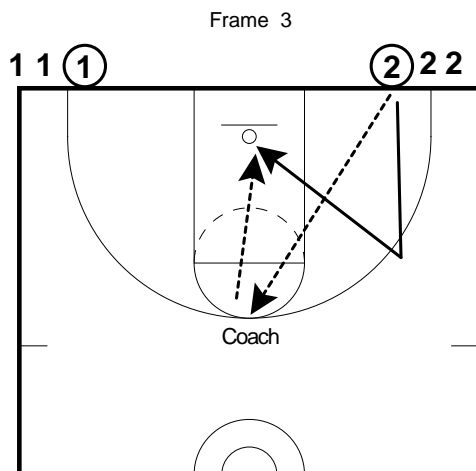
# Two Line Back Cuts



Two lines on the baseline corners. First person in each line has a ball. Coach at the top of the key.



Line #1 passes to the coach. They cut to the wing and backcut to the basket for a shot. #1 will get their own rebound and go to the end of line #2



After #1 has cleared, #2 will pass to the coach. They will fill to the wing and backcut for a shot. #2 will get their own rebound and go to the end of line #1.

\*\*\* Put 1 min 30 sec on the clock. How many lay-ups can we make in that time.

\*\*\* If you have two coaches, split the team into two groups and go to opposite baskets. First team to 10 lay-ups wins.