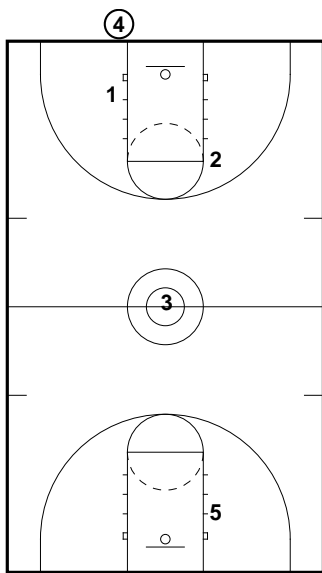
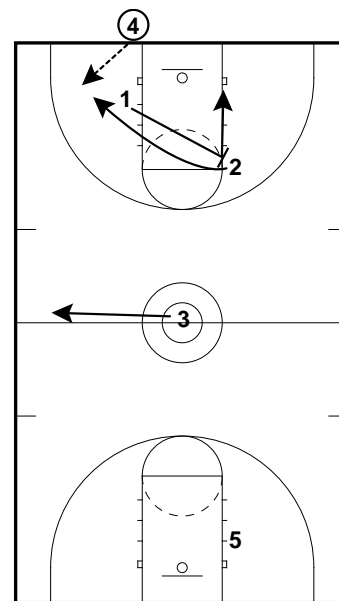


Press Break

Frame 1



Frame 2

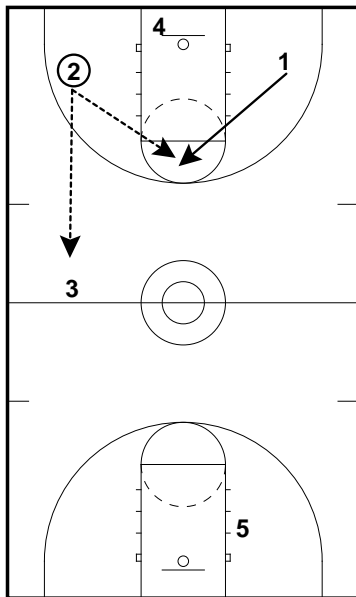


Initial Set-Up

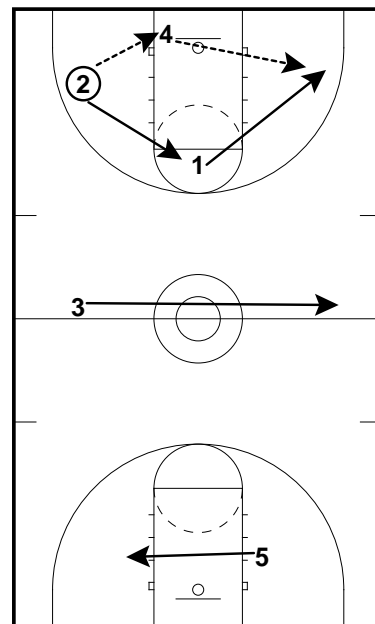
- 4 takes the ball out of bounds
- 1 is on the strong block
- 2 is on the weak elbow
- 3 in at 1/2 court in center
- 5 is on opposite weak block

- 1 will screen for 2. 1 will come back to the ball after the screen.
- 4 passes to 2.
- When 2 catches the ball, 3 moves ball side. 4 steps in.

Frame 3



Frame 4



- On the catch, 2 will look for 3 up the sideline or 1 in the middle.
- If neither is open they can look to reverse the ball to 4.

- On the ball reversal, 1 clears out, 2 cuts middle, 3 comes ball side, 5 moves opposite the ball.
- 1 will look middle then sideline.