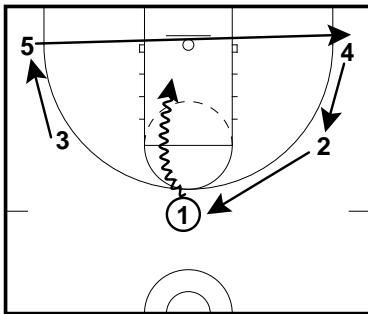


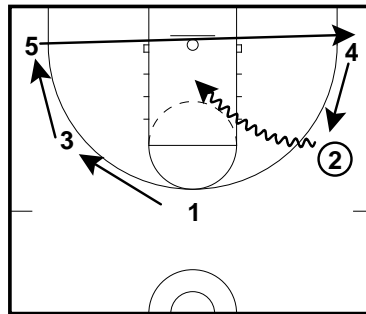
# Layer 4 - Circle Movement

Frame 1



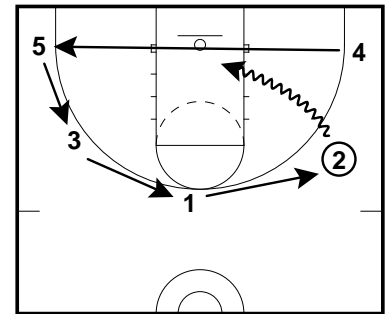
When the ball is at the top and dribbled to the basket to the left. All 4 players must react to this dribble penetration by moving one spot to the left.

Frame 2



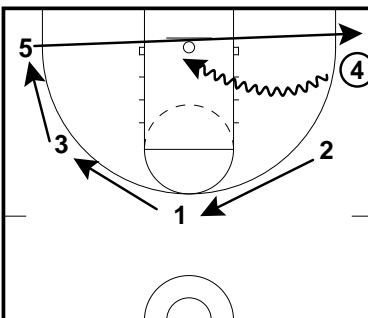
When the ball is at the wing and dribbled to the basket to the left. All 4 players must react to this dribble penetration by moving one spot to the left.

Frame 3



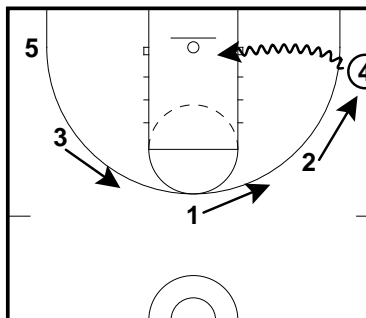
When the ball is at the wing and dribbled to the basket to the right, all 4 players must react to this dribble penetration by moving one spot to the right.

Frame 4



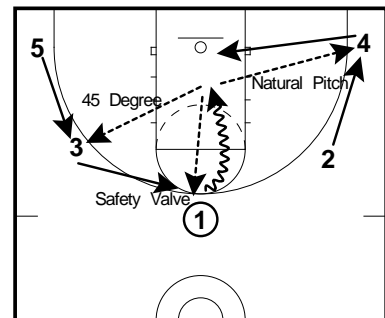
When the ball is in the corner and dribbled to the basket to the left. All 4 players must react to this dribble penetration by moving one spot to the left.

Frame 5



When the ball is in the corner and dribbled to the baseline, Everyone will move one spot as before. The only adjustment is that the opposite corner must stay. This is the natural pitch spot for the dribbler and must be filled.

Frame 6



Circle Movement Theory -

When the team moves in this fashion to the dribbler they are moving away from the direction the defense is helping. They are also putting themselves in the best available spots to receive a pass from the dribbler. We refer to these spots as the Natural pitch, Safety valve and 45 degree pitch windows.

In this frame, #1 is attacking the basket with a right hand drive. #2 is moving to the Natural Pitch Window, #3 to the Safety Valve, #5 to the 45 Degree Window and #4 is cutting to the basket