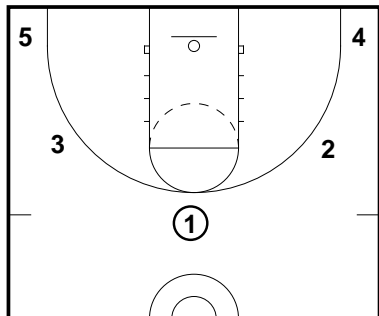


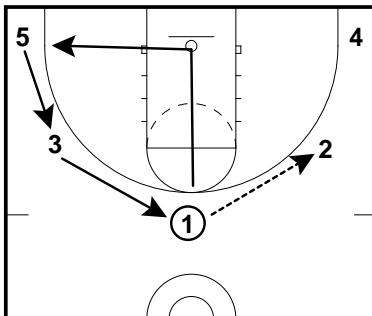
Layer 1 - Pass and Cut

Frame 1



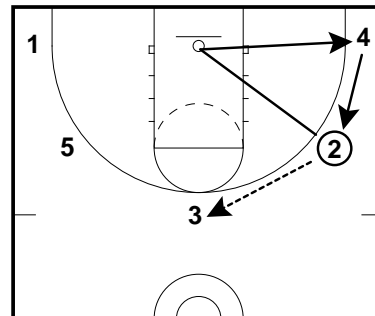
5 out open post set-up. Players are positioned 2-3 steps outside the 3 point line.

Frame 2



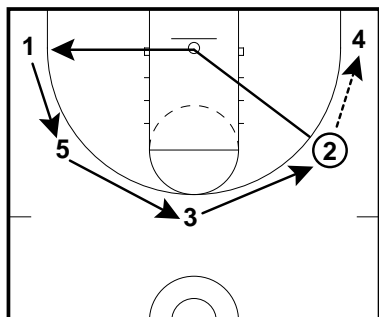
#1 passes to #2 and basket cuts. After they basket cut, they will fill out to the opposite corner. The wing and the corner on the opposite side of the pass must fill up to the open spots.

Frame 3



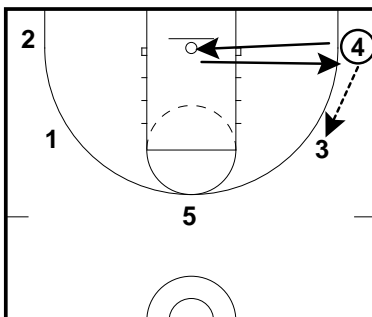
When the ball is passed from the wing to the top, the wing will basket cut and fill out to the same side. The corner will fill up.

Frame 4



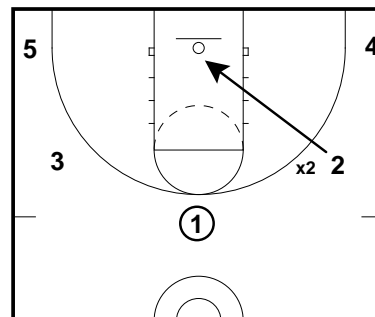
If the ball is passed from the wing to the corner, the wing will basket cut and fill out opposite. Everyone must fill up to an open spot.

Frame 5



When the ball is passed from the corner to the wing, the corner will basket cut and then fill out to the same corner. Many times they will end up filling up to the wing after the wing has passed and cut. The corner may also post up for a few counts and then fill out.

Frame 6



READ LINE RULES:
Any time you are one pass away from the ball and your defender is over the 3 point line(Read Line) denying you the ball, you must basket cut(Back Cut).

Any time you are filling up to a spot one pass away and your defender is denying above the read line, you must basket cut(Back Cut)