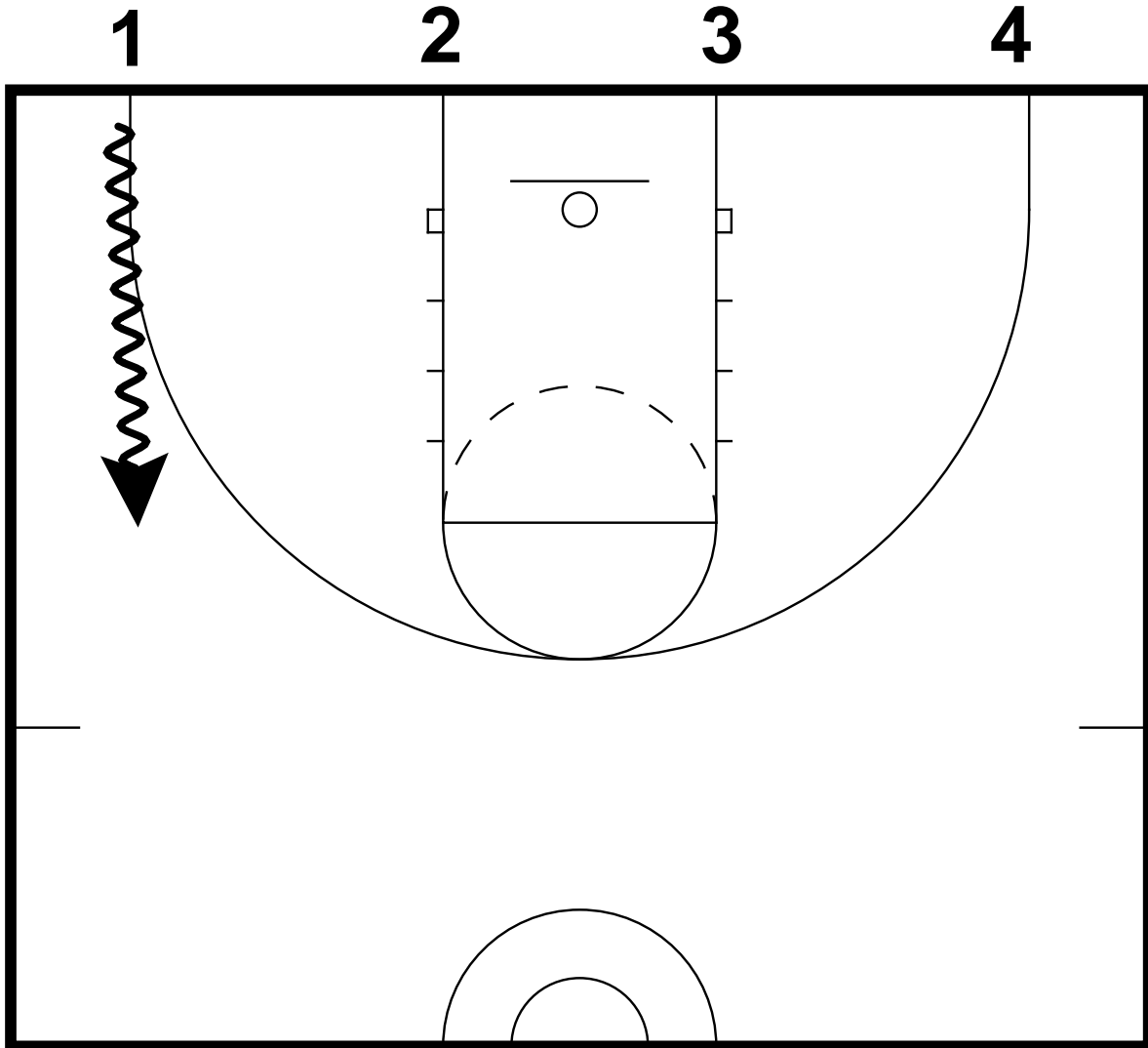


# Fundamental Passing Lines



- A. Lines of 3-4 on the baseline.  
 B. Start in Triple Treat  
 C. Dribble out to the FT line extended then pass back to line.  
 D. Progression
1. Jump stop, front turn and chest pass.
  2. Jump stop, rear turn and bounce pass.
  3. Jump stop, pivot and wrap around pass.
  4. Add a defender
    - Direct drive around the defender
    - Cross over step and drive around the defender.
    - Defender will go to end of the line. Dribbler will jump stop, pivot and pass back to line. They will then close out to play defense.